

RFM

THE MIDLANDS MART

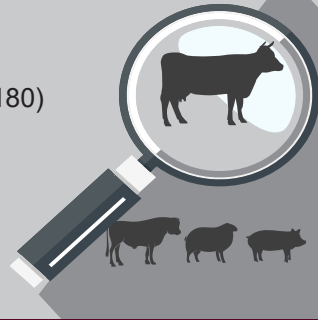
— RUGBYFARMERSMART.COM —

The Charolais Pavilion, Avenue M, Stoneleigh Park,
Kenilworth, Warwickshire CV8 2RG
02476 697731 | www.rugbyfarmersmart.com | 43/139/8013
Office hours: Monday to Friday - 9.00am - 5.00pm
Opening Time: Gates open at 5.30am until further notice

MARKET REPORT FOR MONDAY 29TH JUNE 2026

MARKET AT A GLANCE

Prime Steers to 338p/kg & £2407
Prime Heifers to 390p/kg & £2807
Prime Bulls to 367p & £2865
Cows to 261p/kg & £1980
Lamb SQQ 404.91p/kg (1571 avg £180)
Lambs to 469p & £251
Ewes to £255 (532 Avg £158)



WE WILL BE A **RED** MARKET THE FIRST MONDAY
OF EVERY MONTH. THE REMAINING MONDAYS
WILL BE A **GREEN** MARKET

Catalogues & Entry Forms available by post, email or on the website
www.rugbyfarmersmart.com | admin@rugbyfarmersmart.com

**PLEASE COULD ALL VENDORS BOOK IN STOCK,
EITHER BY A QUICK CALL, TEXT OR EMAIL THANK YOU!**

Office: 02476697731 | Email: admin@rugbyfarmersmart.com | Tom: 07774723758

Tim Webster: 07437101163 | Martin Lloyd: 07399794399

Sunday lairage is now open from 9am-3:00pm
Gates close 3:00pm **STRICTLY.**

VET ATTESTATIONS

From 13th April 2024, all producers selling livestock for slaughter will require a Veterinary Attestation, or evidence of membership of a qualifying assurance scheme. Producers should prepare now for the changes Follow the link below to our FAQs for livestock markets and producers to find out more. <https://www.laa.co.uk/news/5126/veterinary-attestations-faqs-for-livestock-markets->

WELFARE STATEMENT

Following a meeting with Warwickshire Trading Standards & the FSA on Monday we have been asked to highlight the Welfare Issues being reported from the Abattoirs regarding Cull Ewes. These mainly relate to MASTITIS & LAMENESS. Condition Score i.e being very thin.

Please remember that an animal must be fit for the intended journey, it should not be ill, injured or severely lame ie. must be full weight bearing.

These sheep are being rejected at abattoirs around the Country

CELEBRATING FOOD PRODUCERS
& RURAL COMMUNITIES



JOIN US FOR

The Moreton Morrell 2026



Barn Service

Sunday 5 July 2026

Music from 2:30pm | Service at 3:00pm |
Refreshments to follow

Tractors - Animals - Children's Activities

Chesterton Fields Farm, Fosse Way, CV33 9JY




Addington Fund

A voluntary collection will support RABI
(Charity No. 208858) & Addington Fund
(Charity No. 1097092)

RABI[®] 

CATTLE



A tidier bunch of clean cattle forward and more could be sold. Demand firming ever so slightly and starting to see a light at the end of the tunnel.

Steers -

Short of those best end steers today, with only dairy bred sorts on offer. Top of the tree today saw R & T Reeve selling Limousins to 338p/kg with Freeman Farming selling Blues to 320p/kg just pipping dairy Blues from PM Jarrom to 317p/kg. Top grossing bullocks from the Reeve stable selling to £2406 with weighted Limousins, with Pete Jarrom selling British Blue sired steers to £2212.

Heifers -

Some of the best heifers we have seen on offer for some time, with J Cooper & Son selling exceptional Blues to 390p/kg, with Richard Lowe seeing Limousins to 382p/kg for handy weights just pipping R & T Reeve to 364p/kg for tidy Limousin heifers. Top grossing heifers saw Blues with weight to £2807 for J Cooper & Son, with the same stable selling to £2464 and the Reeve Family selling Limousins to £2395.

Bulls -

Topping the bulls today saw Blondes from Jasper Hart selling to 367p/kg, with Richard Lowe selling Limousin bulls to 364p/kg, just pipping Jasper who saw Blondes again at 362p/kg. Dairy bred Blues from Pete Allen sold to 356p/kg. Top grossing bull from Honseberie Farms saw weight to £2864 for Limousins, with Jasper Hart selling to £2275 for Blondes.

Cows -

A handy yarding of cows saw a mixed show. Top of the pops saw H White with slip Blues selling to 261p/kg, with the top gross from Stella Scholes to £1979 for heavyweight Herefords.

Auctioneer: Martin Lloyd

STEERS

Top prices per Kilo

Limousin x	712kg	338ppk	R & T Reeve, Rugby
British Blue	606kg	320ppk	Freeman Farming, Leicester
British Blue	698kg	317ppk	PM Jarrom, Leicester
Limousin x	596kg	316ppk	Freeman Farming, Leicester
Aberdeen Angus	574kg	314ppk	A & N Ellis, Leamington

Top prices per Head

Limousin x	712kg	£2407	R & T Reeve, Rugby
British Blue	698kg	£2213	PM Jarrom, Leicester
British Blue	606kg	£1939	Freeman Farming, Leicester
Limousin x	596kg	£1883	Freeman Farming, Leicester
Aberdeen Angus	594kg	£1818	A & N Ellis, Leamington

HEIFERS

Top prices per Kilo

British Blue	632kg	390ppk	J Cooper & Son, Coventry
Limousin	538kg	382ppk	J & R Lowe, Newbold
Limousin x	658kg	364ppk	J & R Lowe, Newbold
Limousin x	638kg	360ppk	R & T Reeve, Rugby
British Blue	782kg	359ppk	PM Jarrom, Leicester

Top prices per Head

British Blue	782kg	£2807	J Cooper & Son, Coventry
British Blue	632kg	£2465	J Cooper & Son, Coventry
Limousin x	658kg	£2395	R & T Reeve, Rugby
Limousin x	666kg	£2331	PM Jarrom, Leicester
Limousin x	638kg	£2297	PM Jarrom, Leicester



LAMBS 1571 FORWARD

SQQ 404.91p/kg AVG £180 TOP £251

Serious heat throughout the end last week across Europe has very much wilted demand. Slow sales all week as fridges struggle to keep up and consumers turn to cold meals.

A full ring of buyers today with two extra men at ringside but all working to diminished targets for buying. Better fed lambs taking a big premium now. Shape Blue Texels from AF Neal topped the day at 469p/kg ahead of similar goods for S Wright at 459p/kg. Texels from MA Bills down from Market Bosworth saw 456p/kg. Fed meat over 440p/kg regularly. Lambs with feeding first cross and better breaking 420p/kg and run of the mill finished grass lambs over 400p/kg. Leaner sorts 390-400p/kg and a few lesser cades etc trading less. Weight remains the sort after commodity and the all in avg today saw 408p/kg. Heavies to 453p/kg for J Baker & Son and EJ Taylor & Son 452p/kg at 51 and 49kg. Overnight lambs from J Webster 51kg at 449p/kg and TJ Griffiths 50kg at 446p/kg. Weight and meat often over 430p/kg with even weighted second grades 410p/kg plus.

In the lump an all in Avg over £180 dictating a smart trade.

Export lambs to £192 at 44kg for J & R Lowe and 45kg at £190. S Wright 41kg at £188 with A Neal 41kg at £186 and E Brain & Son 45kg at £186. Overall a massive £251 for EJ Taylor & Son at 56.6kg ahead of H White at 57kg to £250. J Webster £248 at 59kg and Townshend Partners £244.

Trade now being monitored as this is a demand issue with National Supply still very slow in the North.

Auctioneer: Tom Wrench

LAMB SQQ 404.91 SQQ p/kg

Per Kilo **under 45.5kg**

Blue Texel	35kg	469ppk	AF HJ Neal, Stockton
Blue Texel	41kg	459ppk	S Wright, Princethorpe
Texel	36kg	456ppk	MA Bills, Hinckley
Blue Texel	41kg	454ppk	AF HJ Neal, Stockton
Blue Texel	39kg	451ppk	AF HJ Neal, Stockton

Per HEAD

Texel	44kg	£192	J & R Lowe, Newbold
Texel	45kg	£190	J & R Lowe, Newbold
Blue Texel	41kg	£188	S Wright, Princethorpe
Blue Texel	41kg	£186	AF HJ Neal, Stockton
Beltex	45kg	£186	E Brain & Sons Ltd, Pathlow

Per Kilo **over 45.5kg**

Charolais	49kg	453ppk	J Baker & Sons, Lutterworth
Charolais	53kg	451ppk	EJ Taylor & Sons, Southam
Texel	51kg	449ppk	J Webster, Southam
Charolais	50kg	446ppk	TJ Griffiths, Banbury
Charolais	56.5kg	444ppk	EJ Taylor & Sons, Southam

Per HEAD

Charolais	56.5kg	£251	EJ Taylor & Sons, Southam
Charolais	57kg	£250	H White, Alverston
Texel	59kg	£248	J Webster, Southam
Texel	60kg	£248	J Webster, Southam
Charolais	55kg	£244	Townshend Partners, Studley



CULL EWES:532 FORWARD top at £255

More about and well received by a ring full of buyers keen for sheep. A yard of smaller ewes but a flying trade start to finish with all accounts fit for numbers. Better end sorts today either v lean or very fat but still chased. Top for the day Jake Mitchell, Nuneaton at £255 for Texel Ewes with big Charollais from AD & RM Thomas £254 & £251 with others £242. M Cole £238 equal with J Mitchell. Top Rams from John Gowling & Sons to £235 whom also sold x bred at £233. Weighted Continentals today 1ll over £200. Suffolks to £223 for IP Lill who also sold at £216 and EJ Taylor & Son £214. Suffolks not as big as usual but still breaking £200 for mediums and over. Mules to £194 for Welsh from RJ Wright and £186 from Showell Farms.
A pair of large consignments of medium Ewes proving the trade of the day with Hill Cheviots saw pens of 23 at £164 and £162 for Leam Farm Partnership. Ewes a very fast trade.

Auctioneer: Tom Wrench

EWES

Texel	£255	JD Mitchell, Nuneaton	Charolais	£242	AD & RM Thomas, Kimcote
Charolais	£254	AD & RM Thomas, Kimcote	Texel	£238	M Cole, Daventry
Charolais	£251	AD & RM Thomas, Kimcote	Texel	£235	JD Mitchell, Nuneaton



4
YEARS

Farm insurance, the way it should be

We're an independent, family run insurance broker that prides itself on long term relationships with clients. This is supported by our team's extensive knowledge and experience of farming and the countryside. Covering the Home Counties, Midlands, South East and South West, we are insurance partners for your farm, agri-business or equestrian enterprise.



Farm & Equine **01865 844985**
www.county-insurance.co.uk/farms

County
Insurance Services 



Rix OAKLEYS



**Your Local
Independent Farm
Fuels Supplier**



Gas Oil
& Diesel



Lubricants
& Additives



Fuel Tanks



Heating Oil



AdBlue®

Call for a quote on:
01675 437557

www.rix.co.uk | midlands@rix.co.uk

T.A.R HIRE

FOR HIRE:

○ 10 & 14 TON REAR MUCK
SPREADERS

○ 12 TON TRAILERS WITH
SILAGE SIDES

○ ROAD SWEEPER

○ FLAT TRAILERS

○ GRASS TOPPERS

○ CONTRACT MUCK

SPREADING SERVICES

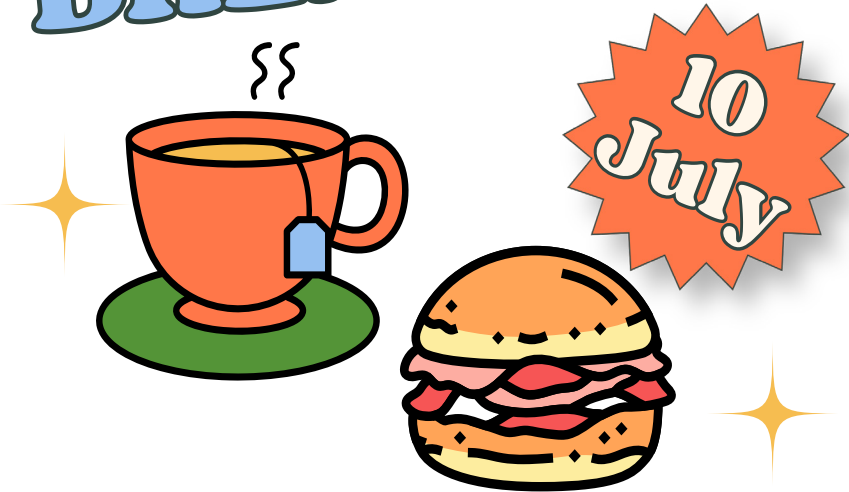
CONTACT:

DAVENTRY (ROB) - 07801791212

HINCKLEY (ALAN) - 07802951179

ORGANISED BY
THE WARWICKSHIRE BREAKFAST BUTTY VAN PROJECT

FARMER'S BREAKFAST



**JOIN US FOR A BACON ROLL AND A
CUPPA FROM 10:30AM TO 12NOON**

**ROSEMARY & NICK GASSON, ALKERTON GROUNDS,
ALKERTON HILL, BALSCOTE, OX15 6JS**

Warwickshire Breakfast Butty Van is an initiative from the Methodist
Church West Midlands District Borderlands Ecumenical Chaplaincy
Supported by Addington Fund

Annual Sale of Straw in the Swath.

A total 615.5 Acres of Barley and Wheat Straw

To include:

108 Acres Winter Wheat Straw at Daventry, 162 Acres Winter Wheat Straw at Flore,
162 Acres Winter Wheat Straw at Loughborough, 24 Acres Winter Wheat Straw at Rugby,
86.5 Acres Winter Barley Straw at Flore, 73 Acres Winter Wheat Straw at Flore.

Together with:

35 Acres Standing Maize at Lutterworth.

For a detailed catalogue please visit www.howkinsandharrison.co.uk/auctions

or contact James Butlin on 07570 586738.

For sale by auction on Thursday 2nd July at 6.30pm

at Lutterworth RFC, Ashby Lane, Bitteswell, Leicestershire, LE17 4LW.

TELEPHONE 01788 564746 / 07921 511852

EMAIL dispersalsales@howkinsandharrison.co.uk

7-11 Albert Street, Rugby, CV21 2RX



HARRIS & CLARKE CHARTERED ACCOUNTANTS

...Specialising In Agriculture...

**Our team of staff has many years of
experience in dealing with the accountancy
and taxation affairs of farmers, landowners
and agricultural contractors**

**For further information or a free no
obligation meeting please contact**

John Harris

**7 Billing Road, Northampton, NN1 5AM
Telephone 01604 622274
www.harrisandclarke.co.uk**



Have Wool?

Laurence Pierce (Wool Merchants)

One of the largest and best known wool buyers require 2026 wool clips

Please contact your local agent
Steve Eales on 07732213278

Wool collection commences june
speedy payment in full

prices for 2026 greatly increased
for clean dry wool



Here to listen and support you

Contact The Farming Community Network
to speak in confidence with a sympathetic
person who understands farming life.

Call 03000 111 999

Email help@fcn.org.uk

(Helpline open 7am-11pm, 365 days of the year)

FCN | THE FARMING
COMMUNITY
NETWORK

Berryfields Farm
**BERRYSTOCK
FEEDS**



**PROVIDING CATTLE
AND SHEEP FEEDS FOR
THE MODERN MARKET**



Do You Want?

- ◆ HIGH PERFORMANCE
- ◆ COST EFFECTIVE
- ◆ FULLY ASSURED
- ◆ COMPLETE FEEDS
- ◆ INTEGRATED FEEDING SYSTEMS

Then contact **BERRYSTOCK FEEDS:**

Tel: 01788 890320 E-Mail: admin@berryfieldsfarm.co.uk

Web: www.berrystockfeeds.co.uk

UFAS 350

DO IT THE BERRYSTOCK WAY



**WE COVER SMALL FARMS,
LARGE FARMS AND
EVERYTHING IN BETWEEN**

***From sheep farmers to arable farmers.
Flower growers to poultry farmers.***

We're proud to insure over 70% of UK farms with our Farm Select insurance. But we want more farms to benefit from our great cover and local service. That's why we've introduced Farm Essentials insurance - designed to meet the needs of smaller farms.

As your local agency, we are close by and can provide expert advice and hands-on support when you need it.

**Call Coventry Office
on 02478 444510**

**NFU Mutual, 6 Eastwood Business Village,
Harry Weston Road, Hinkley Business Park,
Coventry, CV3 2JB**



NFU Mutual
| INSURANCE | PENSIONS | INVESTMENTS